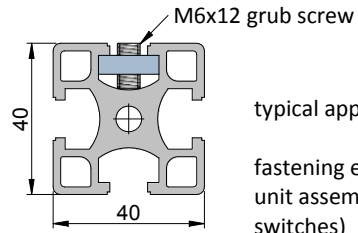
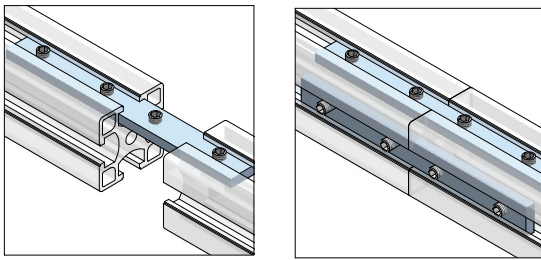


sliding bar

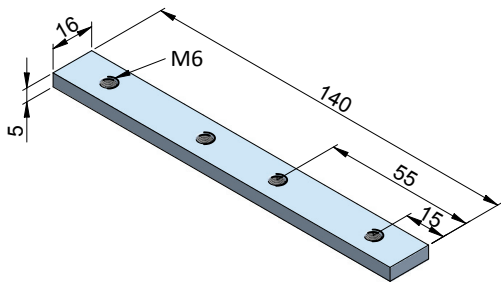


typical application

fastening element for facilitated unit assembly (valves, limit switches)

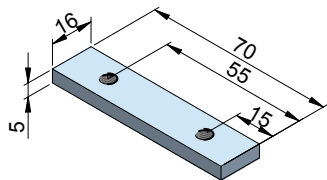
joining and extending profiles vertically or horizontally.

easy positioning and fixing in the profile groove.



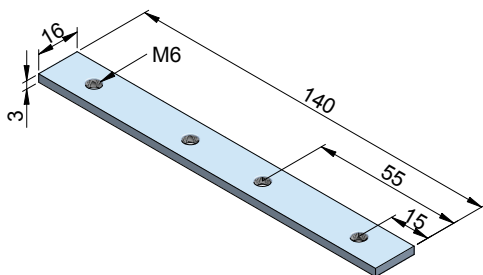
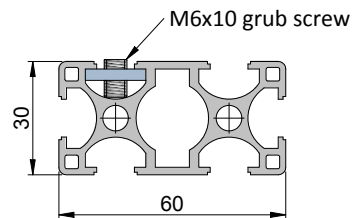
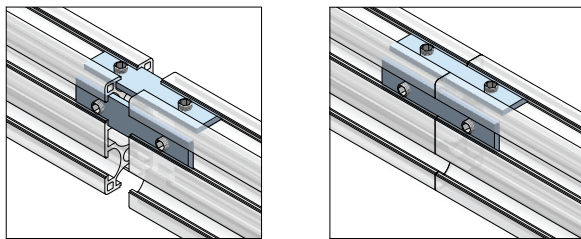
sliding bar 16x5x140 (4xM6)
Part Number: 026.58

used with 40 series profiles
material: 16x5mm mild steel, z/plated



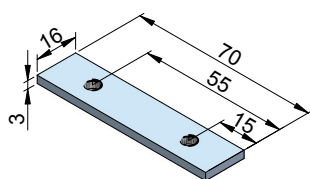
sliding bar 16x5x70 (2xM6)
Part Number: 026.59

used with 40 series profiles
material: 16x5mm mild steel, z/plated



sliding bar 16x3x140 (4xM6)
Part Number: 027.15

used with 30 series profiles
material: 16x3mm mild steel, z/plated



sliding bar 16x3x70 (2xM6)
Part Number: 027.17

used with 30 series profiles
material: 16x3mm mild steel, z/plated