



**ErgoChair - ergonomic chair**  
designed for the factory worker

the backrest and seat foot ring adjustment ranges are designed to cover a large variety of production environments.

- backrest and extra wide seat are made from black moulded polyurethane foam
- burled surfaces for better body ventilation
- base made from black nylon with five glides
- adjustable footring made from aluminium die cast
- seat mechanism fitted with back/seat tilt lever
- backrest adjustment by handwheel

adjustability:

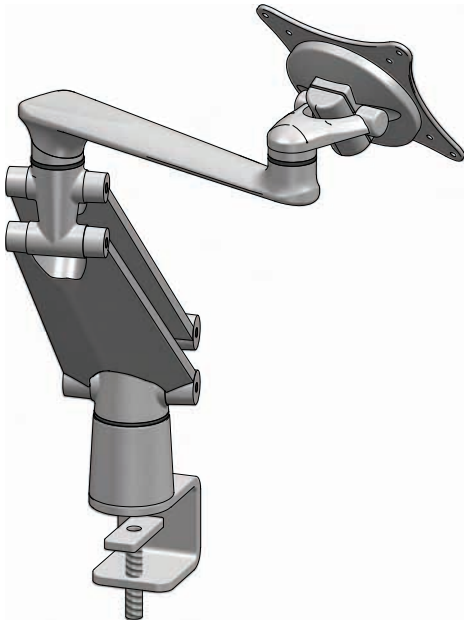
height: min. 560mm, max. 800mm

foot ring: 150mm

backrest: 80mm

seat/back tilt: 20 deg



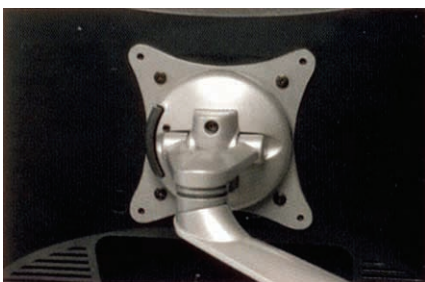


**adjustable monitor arm features**

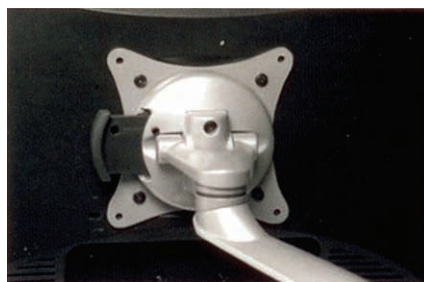
- integral gas spring, counterbalances screen weight
- arm mechanism maintains screen alignment
- VESA compliant mounting bracket
- cable management taken through integral internal route guides
- quick release monitor mechanism

**adjustable monitor arm benefits**

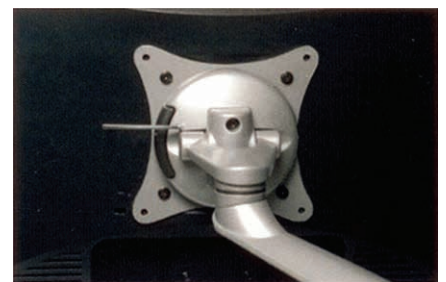
- frees up workspace on the desk
- ergonomic adjustment for optimal view angle / distance
- suitable with all AME System workstations and computer desks



release catch shut

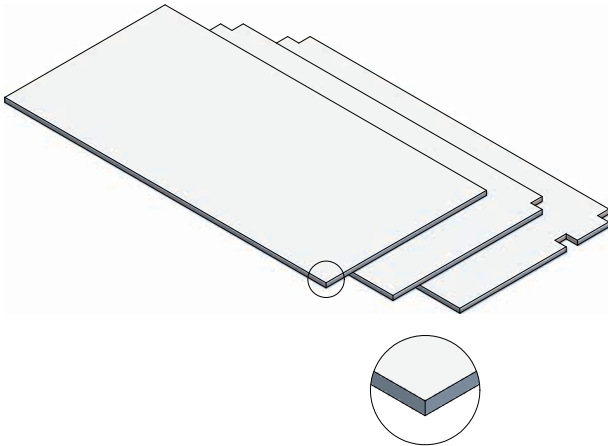


release catch open



security lock screw

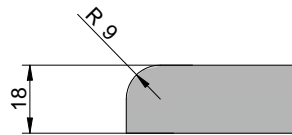
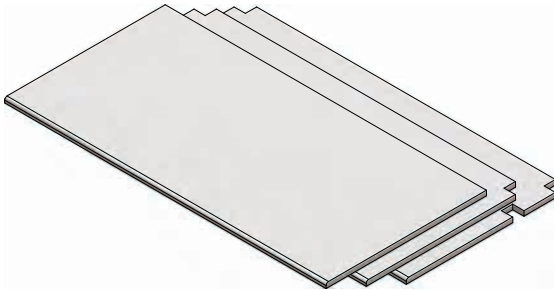
**\*Note:** VESA standard means a hole pattern on the back of the monitor: 3"x3" or 4"x4" (75mm x 75mm or 100mm x 100mm). The diameter of screws are 4mm. Most LCD monitor manufacturers agreed on the VESA standard. The four holes may be centered or are located on the lower edge of the monitor. With some models you might have to remove the original stand before you will see the 4 holes.



**laminated bench top**

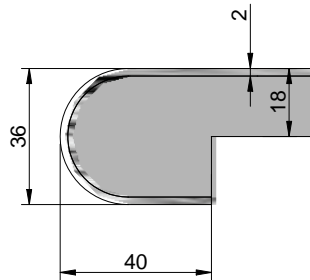
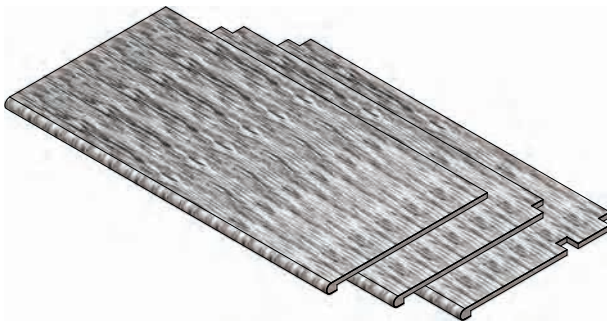


made from 16mm MDF  
covered with 0.8mm  
lamine square edged  
colour: silver grey



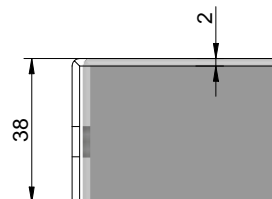
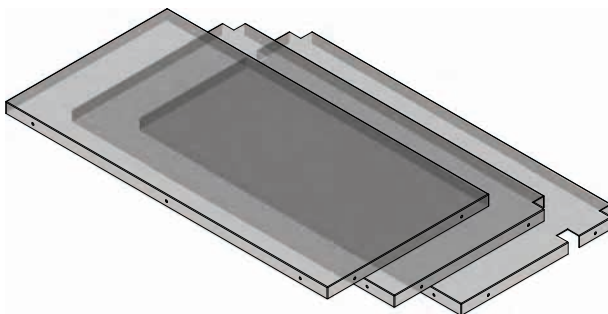
**vinyl wrap bench top**

made from 18mm MDF  
vinyl wrapped with a radius  
on the front edge  
colour: shadow grey



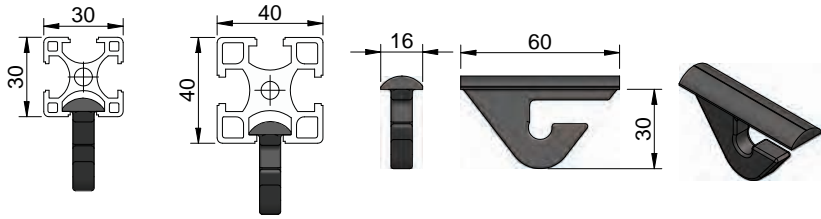
**vinyl bench top**

made from 16mm MDF  
covered with heavy duty,  
hard wearing 2mm thick vinyl  
colour: light grey



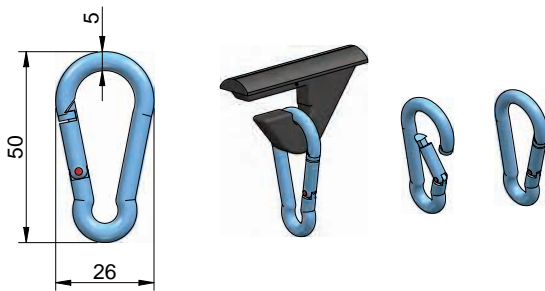
**stainless steel bench top**

made from 2mm thick,  
302 grade stainless steel,  
corners welded



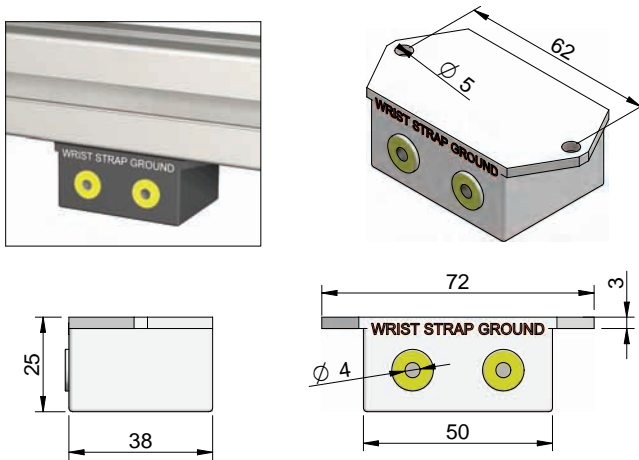
**tool hanger**  
**Part Number: 386.12**

PA black  
Axial load max. 12kg



**snap hook**  
**Part Number: 386.14**

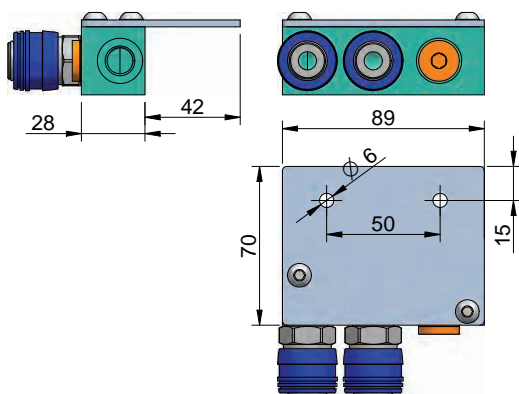
material:  $\varnothing 5\text{mm}$  MS  
z/plated



**ESD bracket**  
**Part Number: 408.16**

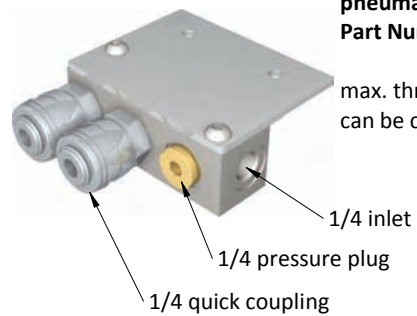
encapsulated black casing with  
built-in 1Mohm resistor suited for  
4mm banana sockets.

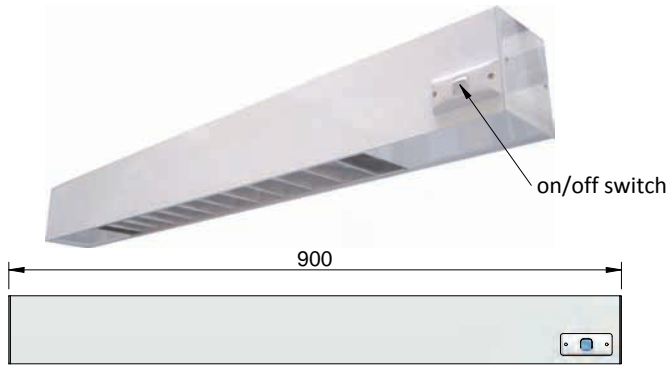
bracket with 3m of grounding  
wire for attaching to facility  
ground or common power outlet



**pneumatic manifold**  
**Part Number: 386.30**

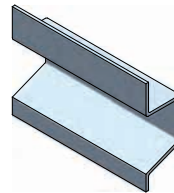
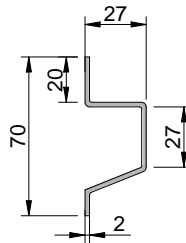
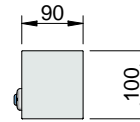
max. three power tools  
can be connected to manifold





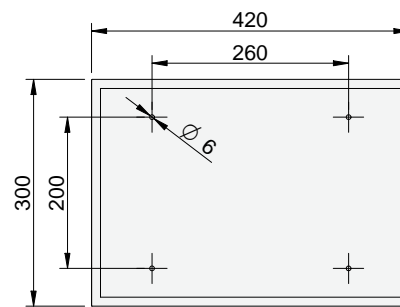
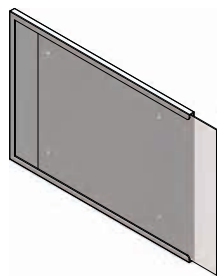
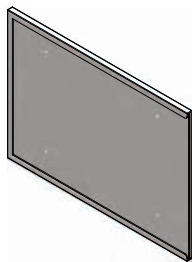
**overhead light unit**  
**Part Number: 386.10**

material: aluminium powder coated  
with built-in on/off switch



**bin holder rail profile**  
**Part Number: 026.70**

material: aluminium, mill finish  
maximum length: 4000mm



clear cover

vertical mount

horizontal mount



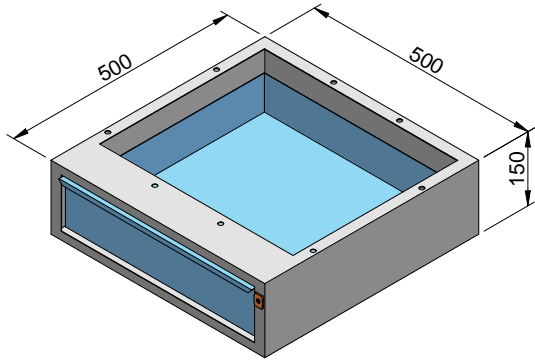
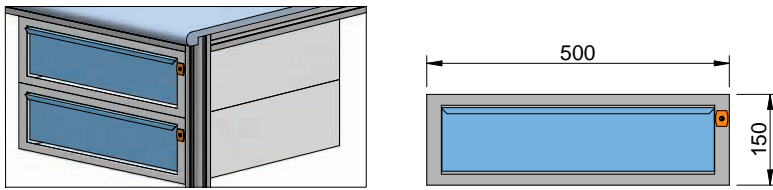
**A3 size card holder**  
**Part Number: 406.30**

material: 1.2mm steel, powder coated  
colour - silver grey

card holder with four countersink  
mounting holes to suit M6 screw and  
2mm clear cover

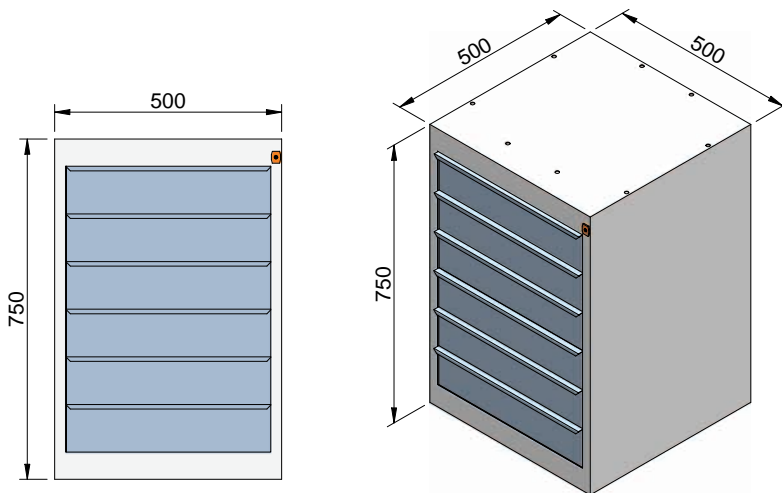
can be mounted vertically or  
horizontally in two height positions

ErgoStyle/ErgoMan workstations  
accessories overview



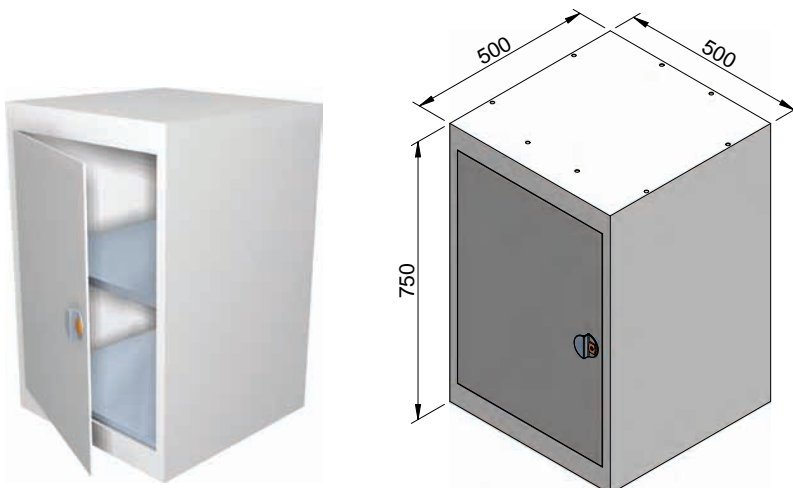
**single tool drawer**  
**Part Number: 408.01**

material: steel, powder coated  
colour: silver grey



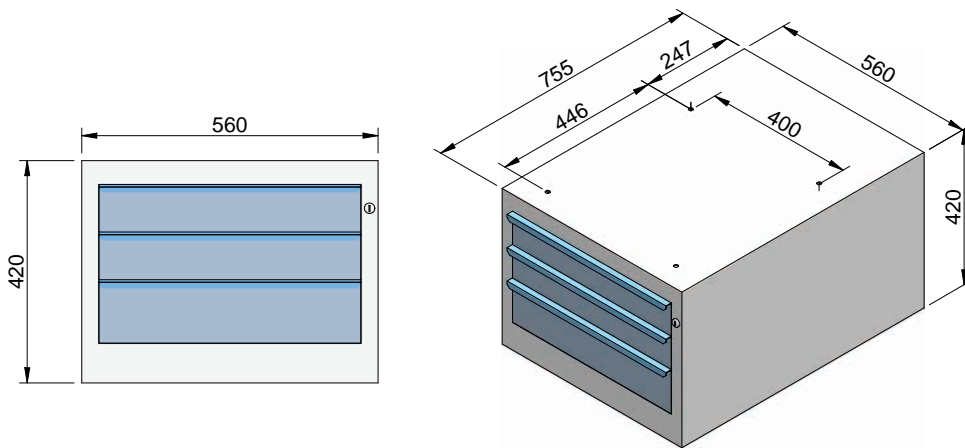
**six drawer tool cabinet**  
**Part Number: 408.06**

material: steel, powder coated  
colour: silver grey



**lockable cupboard**  
**Part Number: 420.02**

material: steel, powder coated  
colour: silver grey  
including one adjustable shelf



**heavy duty tool drawer 420-3**  
**Part Number: 408.43**

material: steel, powder coated  
colour: silver grey  
including adjustable dividers



**cupboard with sliding doors**

**Part Number: 418.16**  
to suit 1600 workstation

**Part Number 418.18**  
to suit 1800 workstation

made from aluminium profiles,  
adjustable shelves and panels made  
from 8mm melamine board  
sliding door with clear 6mm p/carb



ErgoStyle/ErgoMan workstations  
foot rest overview



**built-in foot rest - standard**

suitable for ErgoStyle workstations:  
128, 168, 188 series  
height adjustment: 250mm  
foot plate: aluminium checker plate



**built-in foot rest - with long upright**

suitable for ErgoStyle workstations:  
96, 124, 126 series  
height adjustment: 250mm  
foot plate: aluminium checker plate



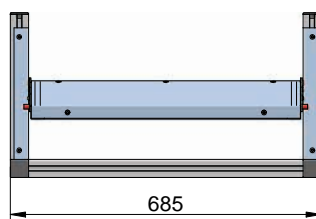
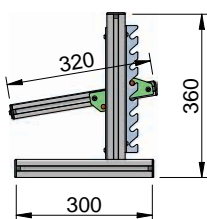
**built-in foot rest - with short uprights**

suitable for  
ErgoMan and activDesk workstations:  
height adjustment: 250mm  
foot plate: aluminium checker plate

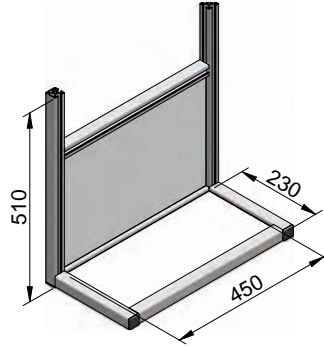


**free standing foot rest**

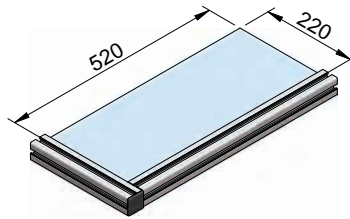
suitable for all workstations:  
height adjustment: 250mm  
foot plate: aluminium checker plate



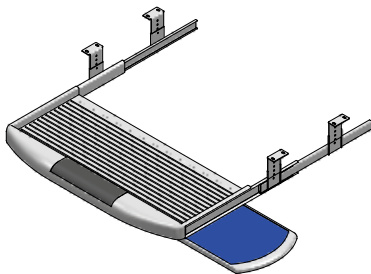




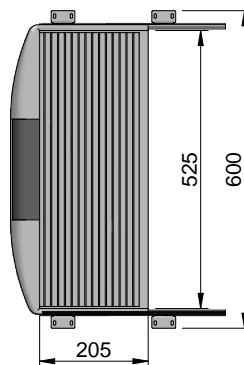
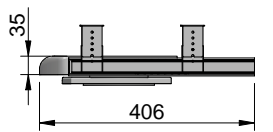
**computer holder - standard**  
suitable for all workstations

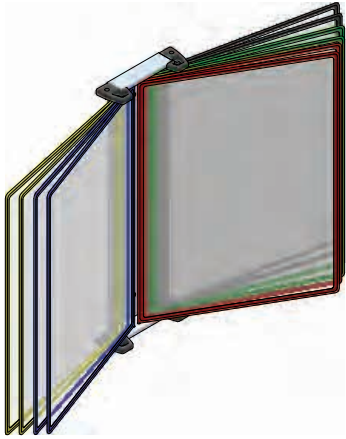


**computer holder - shelf**  
suitable for ErgoStyle  
workstations



**keyboard drawer**  
with slide out mouse pad





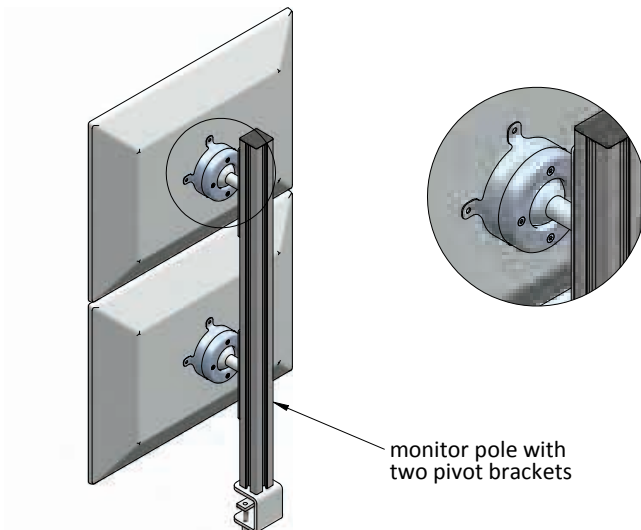
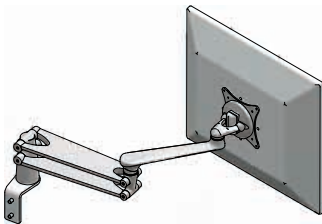
**wall unit with 10 pockets**

flat wall mount bracket and 10  
colour coded pivoting clear pockets  
to suit A4 size documents

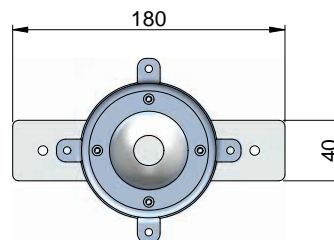


**flat screen monitor arm**

allows the monitor viewing height,  
distance and tilt to be adjusted  
with a touch of the hand.  
great space saver



monitor pole with  
two pivot brackets



**adjustable pivot bracket**

supports 15" to 24" LCD monitors  
vesa standard mounting

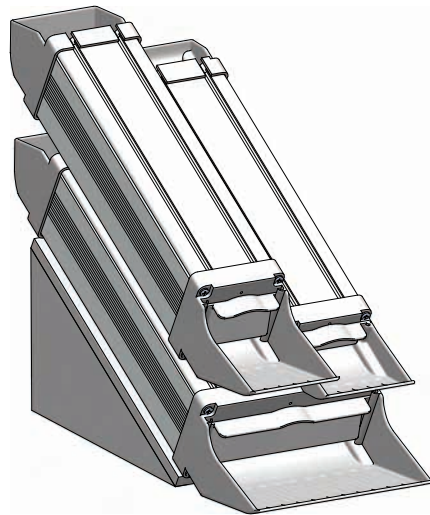


**grab container system**

modular in design and construction, this ergonomic container system can be used for storing various small items such as screws and nuts.

the modular design allows for easy stacking.

the ergonomic design of the grab ledges allows the user to pick up small parts quickly and securely.

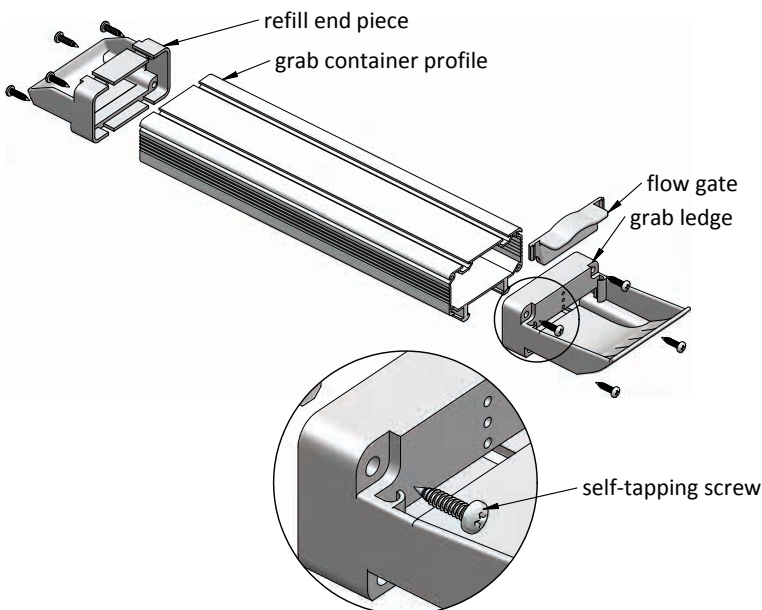


**simple stacking system**

available in three standard sizes of varying profile lengths:

- 180x90
- 90x90
- 90x45

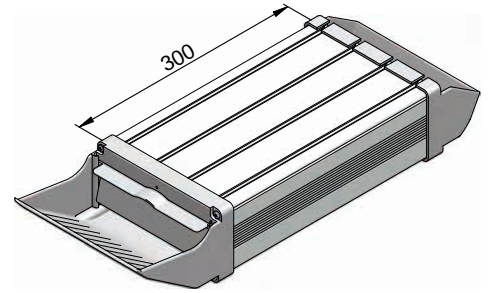
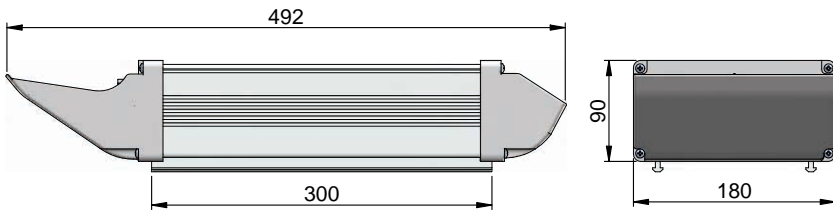
profile length 200 or 300mm



grab containers are available in self assembly modules.

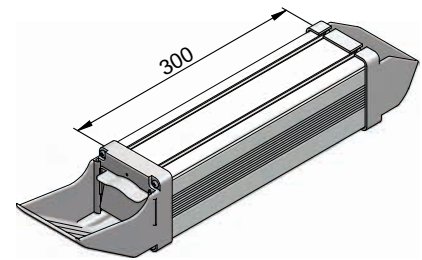
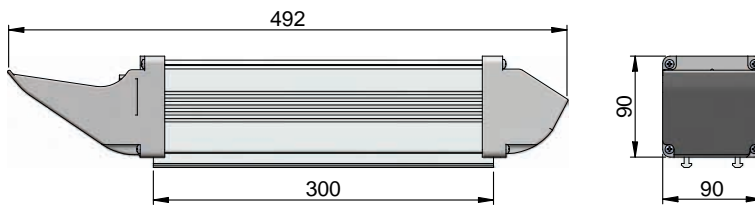
parts are placed into the refill end piece to fill the container profile cavity.

flow gate controls the amount of parts that sit in the grab ledge.



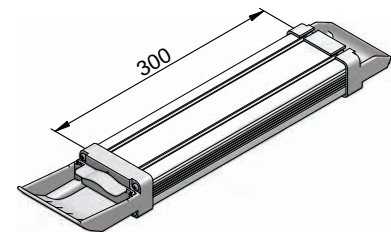
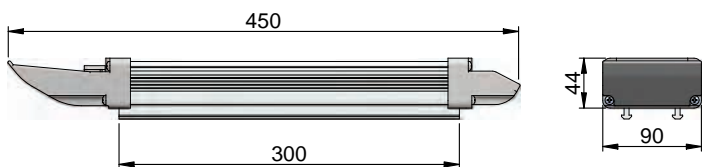
grab container - 180x90

200mm p/n: 441.66  
300mm p/n: 441.67



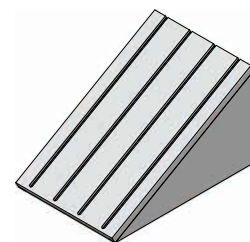
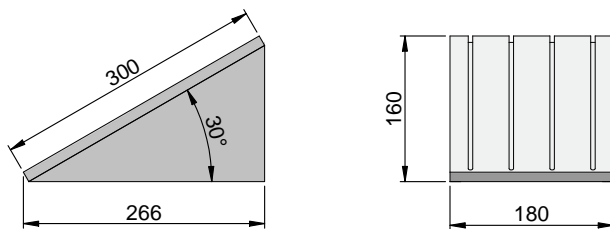
grab container - 90x90

200mm p/n: 441.46  
300mm p/n: 441.47



grab container - 90x45

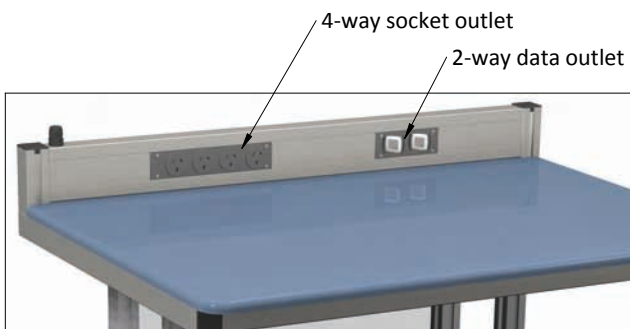
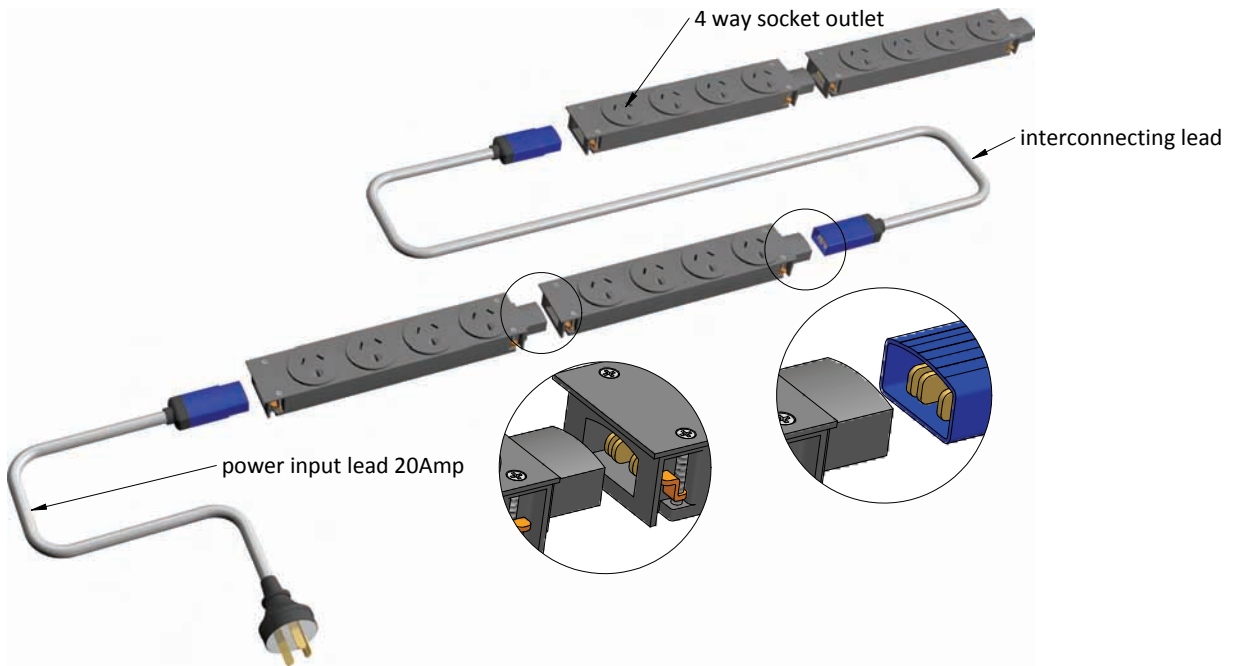
200mm p/n: 441.26  
300mm p/n: 441.27



grab container base

base 180 p/n: 441.08  
base 90 p/n: 441.06

modular soft wire system  
for efficient power management applications



**typical application**

used for workstations power distribution  
suitable for horizontal and vertical  
installations

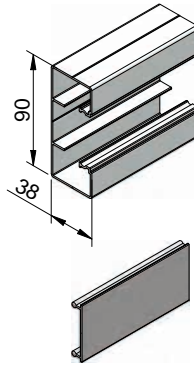
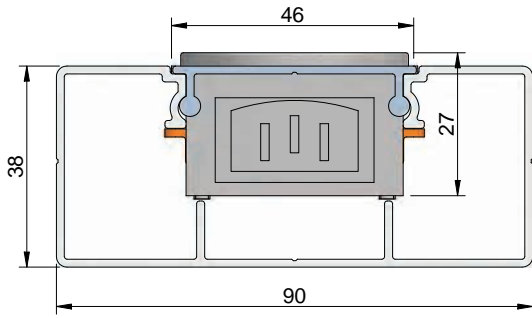
- self switching, double pole, 20amp rating
- total modularity, expandable system
- safe interlocking systems
- DIY installation, user friendly
- complies with AS/NZ 61535.1



4-way socket outlet

2-way data outlet

modular soft wire system  
for efficient power management applications

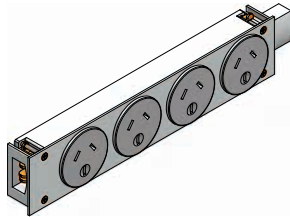
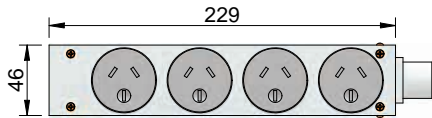
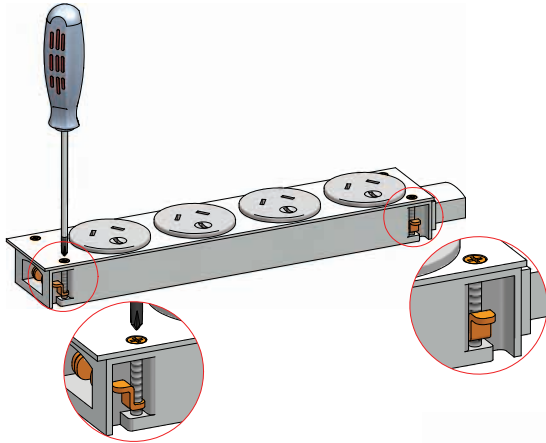


**electrical duct**  
Part Number: 452.20

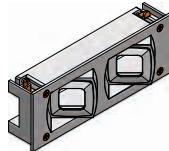
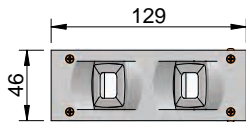
Material: anodised aluminium  
max. length: 6000mm  
weight = 1.03kg/m

**electrical duct cover**  
Part Number: 452.21

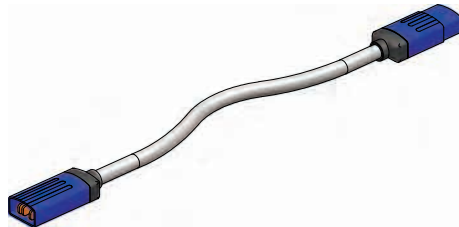
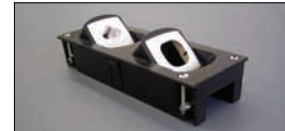
Material: anodised aluminium  
max. length: 3000mm  
weight = 0.28kg/m



**4-way socket outlet**  
Part Number: 312.80



**2-way data module**  
Part Number: 312.82

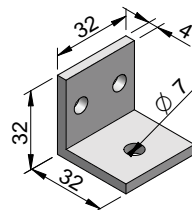


**interconnecting lead**  
Part Number: 312.05 500mm  
312.10 1000mm  
312.15 1500mm  
312.20 2000mm



**16mm cable gland**  
Part Number: 321.42

Material: black plastic



**electrical duct mounting angle**  
Part Number: 312.32

Material: aluminium



1. inspection workstation  
2000x900x900 (WxDxH)  
ErgoStyle 100/209

design features:

- lockable six drawer unit
- lockable computer cabinet
- electrical duct mounted under benchtop
- built-in adjustable foot rest
- removable benchtop enclosure



2. lockable cabinet with two doors  
1800x600x2000 (WxDxH)

design features:

- height adjustable shelves
- side and door panels made from clear 6mm p/carb
- sloped roof



3. lockable cabinet  
600x430x2000 (WxDxH)

design features:

- height adjustable shelves
- side and door panels made from clear 6mm p/carb
- sloped roof



in line workpiece carrier rack

4. assembly workstation module  
ErgoStyle 100/94

- design features
- modular gravity roller conveyor
  - built-in adjustable foot rest



5. assembly workstation module  
ErgoStyle 400/94

- design features
- built-in adjustable foot rest
  - overhead light unit
  - tool hanger bar





6. assembly workstation  
ErgoStyle 100/188

- design features:
- container stand 370-1
  - assembly trolley 820-3
  - assembly trolley 430-2



8. inspection/repair/test workstation  
ErgoMan 800/188 customised

- design features:
- extra wide adjustable foot rest
  - split adjustable shelving
  - pin board for drawings



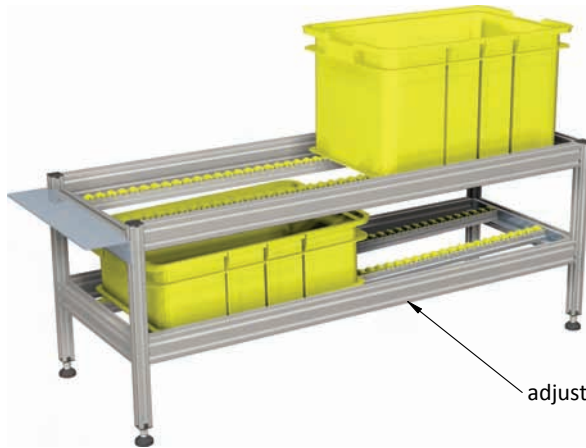
7. packing station  
ErgoMan 800/128

- design features:
- stainless steel top
  - set of lockable castors
  - paper holder
  - packing container shelf
  - label printer shelf



9. modular lab benches

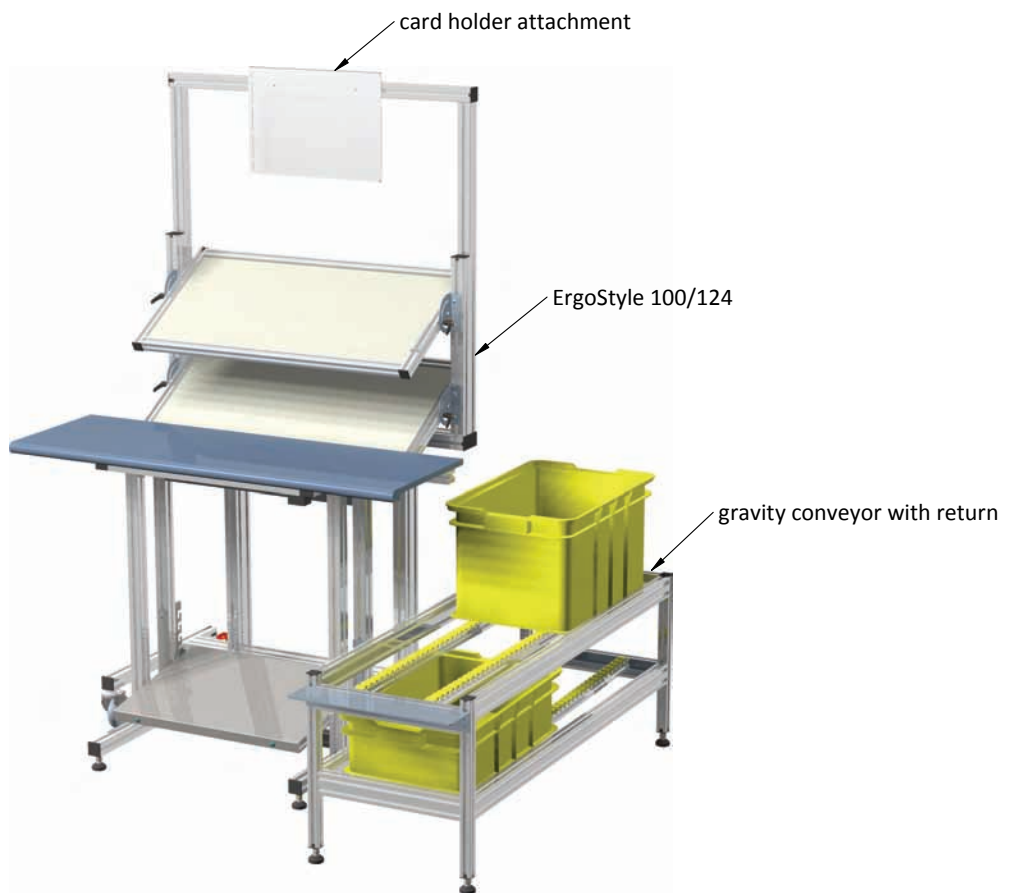
modular benches for  
different layout configuration



10. gravity conveyor with adjustable return

designed and made to transfer 25 lt and 50 lt Chep containers between workstations

adjustable gravity return



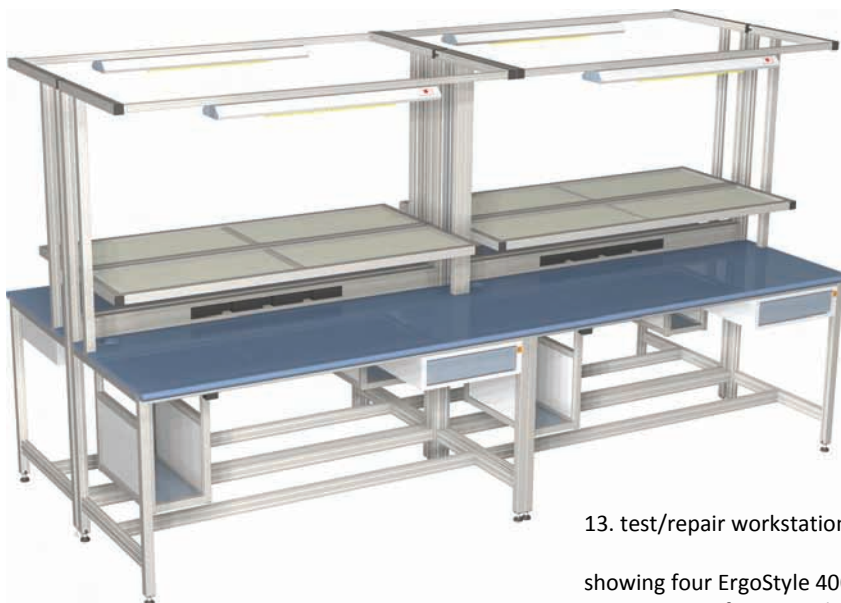
11. assembly workstation module  
ErgoStyle 100/124

showing possible configuration with assembly trolley and gravity conveyor



12. assembly/subassembly line

showing two ErgoStyle 100/124  
workstations, two gravity conveyors  
and two assembly trolleys positioned  
at the front of operators  
easy to reconfigure layout combination



13. test/repair workstation

showing four ErgoStyle 400/188  
in a group configuration layout

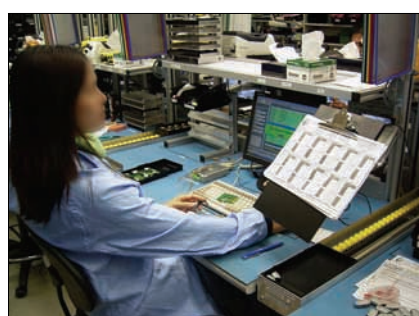


14. test/calibration cell



15. manual assembly line with  
gravity conveyors

product gallery  
custom made products



product gallery  
custom made products

