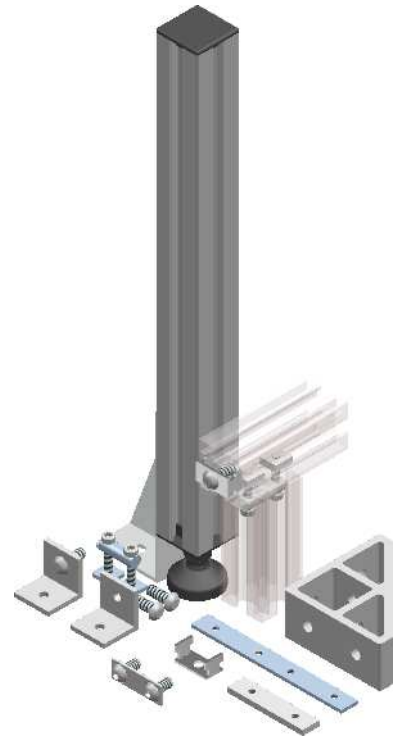
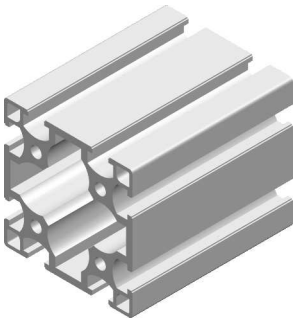


Price List v6
Aluminium Profiles and Accessories

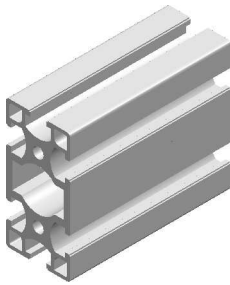


price list
aluminium profiles and accessories

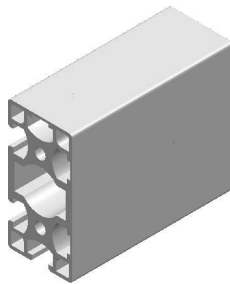
40 series



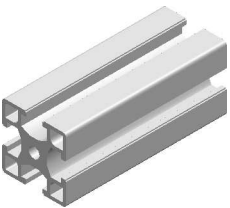
80x80 profile
p/n 265.80
weight=5.00kg/m
price: \$83/m



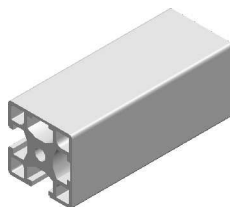
40x80 profile
p/n 026.34
weight=3.07kg/m
price: \$51/m



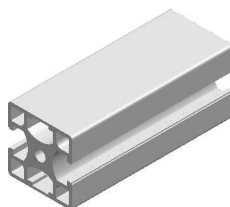
40x80/90 profile
p/n 026.36
weight=3.21kg/m
price: \$54/m



40x40 profile
p/n 026.33
weight=1.58kg/m
price: \$26/m

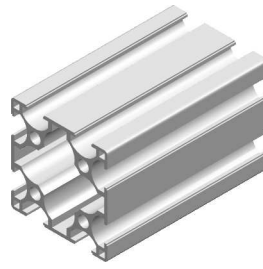


40x40/90 profile
p/n 026.32
weight=1.67kg/m
price: \$28/m

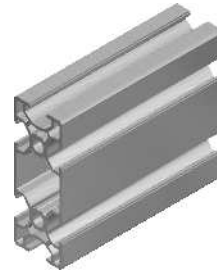


40x40/180 profile
p/n 026.38
weight=1.67kg/m
price: \$28/m

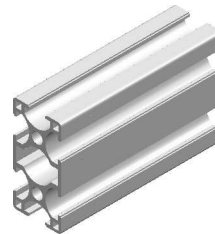
30 series



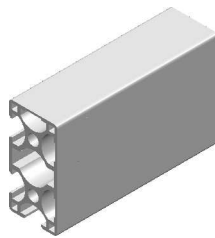
60x60 profile
p/n 439.66
weight=2.17kg/m
price: \$38/m



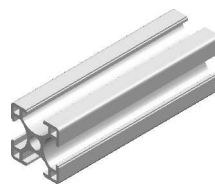
30x80 profile
p/n 419.09
weight=1.39kg/m
price: \$32/m



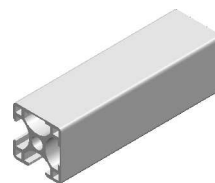
30x60 profile
p/n 419.09
weight=1.39kg/m
price: \$25/m



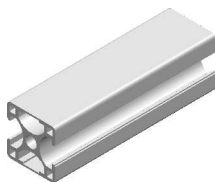
30x60/90 profile
p/n 419.36
weight=1.52kg/m
price: \$27/m



30x30 profile
p/n 419.06
weight=0.75kg/m
price: \$15/m



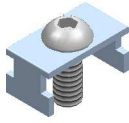
30x30/90 profile
p/n 439.45
weight=0.84kg/m
price: \$16/m



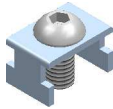
30x30/180 profile
p/n 439.18
weight=0.84kg/m
price: \$16/m

please note: prices not including GST

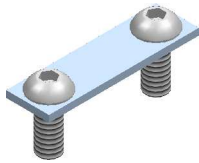
price list
aluminium profiles and accessories



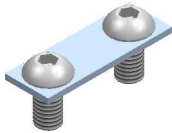
M8-16 bracket connector
for 40 series profiles only
p/n 026.07
price: \$2.50



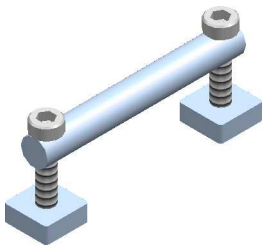
M8-10 bracket connector
for 30 series profiles only
p/n 026.08
price: \$2.50



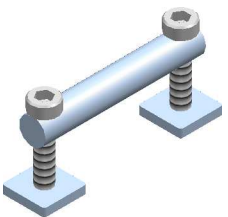
40x80 plate connector
p/n 046.48
price: \$3.80



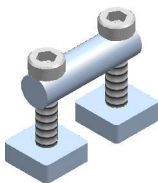
30x60 plate connector
p/n 046.36
price: \$3.60



bolt connector 80
p/n 056.03
price: \$5.20

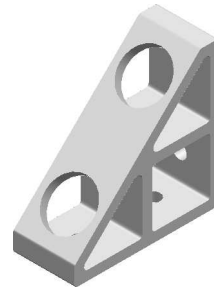


bolt connector 60
p/n 056.06
price: \$5.20



bolt connector 40
p/n 056.02
price: \$5.00

bolt connector 30
p/n 056.01
price: \$4.70

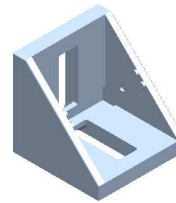


90x90 corner bracket
for 40 series profiles only
p/n 562.99
price: \$16.50



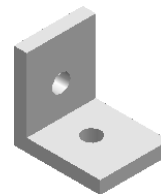
40x80 joining plate
for 40 series profiles
Ø8mm countersunk holes
price: \$3.50

30x60 joining plate
for 30 series profiles
Ø8mm countersunk holes
price: \$3.00

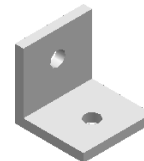


40x40 corner bracket
for 40 series profiles
p/n 562.44
price: \$8.80

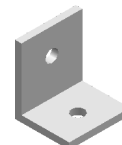
30x30 corner bracket
for 30x30 series profiles
p/n 562.33
price: \$8.20



40x40x6 aluminium angle
for 40 series profiles only
p/n 026.43
price: \$4.60



32x32x4 aluminium angle
for 40 series profiles only
p/n 026.23
price: \$2.80

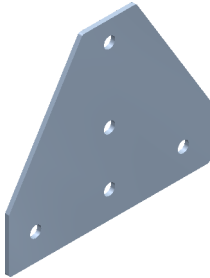


32x25x3 aluminium angle
p/n 026.20
price: \$2.50

price list
aluminium profiles and accessories



bracing plate - L type
for 40 series profiles only
p/n 562.24
price: \$8.80



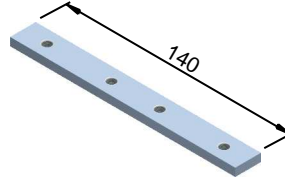
bracing plate - T type
for 40 series profiles only
p/n 562.26
price: \$9.60



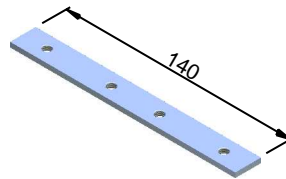
tilt bracket
p/n 562.35
price: \$14.60



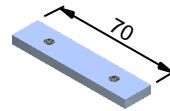
foundation bracket
for 40 series profiles only
p/n 560.10
price: \$12.60



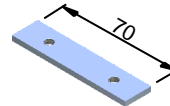
sliding bar 16x5x140 (4xM6)
for 40 series profiles only
p/n 026.58
price: \$8.20



sliding bar 16x3x140 (4xM6)
for 30 series profiles only
p/n 027.15
price: \$5.60



sliding bar 16x5x70 (2xM6)
for 40 series profiles only
p/n 026.59
price: \$7.40



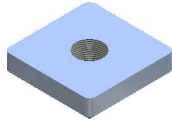
sliding bar 16x3x70 (2xM6)
for 30 series profiles only
p/n 027.17
price: \$4.20



Ø8 16x16x2 square washer
for 30 series profiles only
p/n 426.36
(incl. 1 x M8x16 BHSS)
price: \$0.80

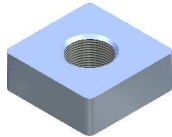
Ø8 16x16x3 square washer
for 40 series profiles only
p/n 426.38
(incl. 1 x M8x16 BHSS)
price: \$0.80

price list
aluminium profiles and accessories



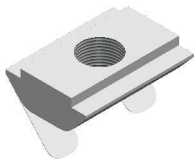
16x16x4 square nut (M5, M6)

M5 p/n 427.25
M6 p/n 427.26
price: \$0.60



16x16x6 square nut (M6, M8)

M6 p/n 427.06
M8 p/n 427.08
price: \$0.60



spring nut (M6, M8)

M6 p/n 428.66
M8 p/n 428.88
price: \$1.50

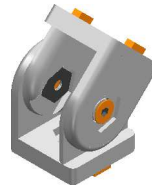


slot nut (M5, M6)

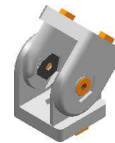
M5 p/n 426.15
M6 p/n 426.16
price: \$0.50



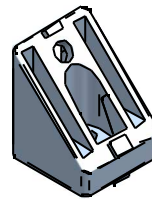
M10 half hex nut
p/n 427.01
price: \$0.40



heavy duty hinge 40x40
for 40 series profiles only
p/n 373.31
price: \$19



heavy duty hinge 30x30
for 30 series profiles only
p/n 373.33
price: \$18



45 deg angle bracket
for 40 series profiles only
p/n 562.71
price: \$9.60

~~D I S C O N T I N U E D~~



~~nylon hinge black - type 1
countersink holes~~

~~hinge 30/30 p/n 388.33 pitch 35mm
hinge 30/40 p/n 388.34 pitch 40mm
hinge 40/40 p/n 388.44 pitch 45mm
--- DISCONTINUED ---~~

~~D I S C O N T I N U E D~~



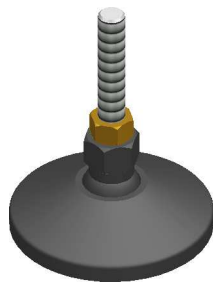
nylon hinge black - type 2
counterbore holes

hinge 30/30 p/n 388.73 pitch 31mm
hinge 40/40 p/n 388.74 pitch 41mm
price: \$8.20

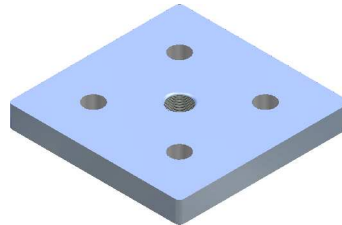
price list
aluminium profiles and accessories



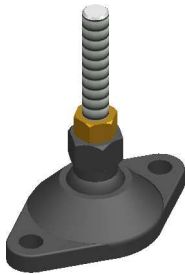
foot Ø90xM12 with
mounting holes
p/n 560.92
price: \$16.60



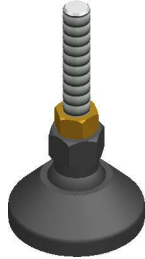
foot Ø90xM12
p/n 560.90
price: \$14.60



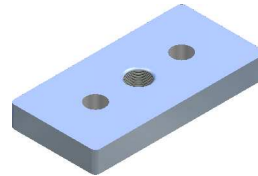
foot plate 80x80
p/n 406.22
price: \$16.40



foot Ø60xM12 with
mounting holes
p/n 560.62
price: \$15.50



foot Ø60xM12
p/n 560.60
price: \$13.50



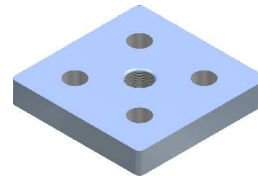
foot plate 40x80
p/n 406.32
price: \$13.50



foot Ø40xM10 with
mounting holes
p/n 560.44
price: \$10.20



foot Ø40xM10
p/n 560.40
price: \$8.70



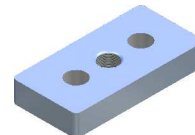
foot plate 60x60
p/n 410.66
price: \$14.50



foot Ø40xM8 with
mounting holes
p/n 560.46
price: \$9



foot Ø40xM8
p/n 560.43
price: \$7.50

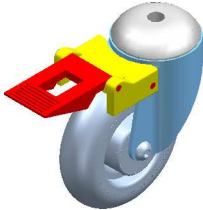


foot plate 30x60
p/n 406.36
price: \$12.60

price list
aluminium profiles and accessories



bolt mount Ø100 wheel swivel
p/n 470.50
price: \$32



bolt mount Ø100 wheel swivel
with brake
p/n 470.51
price: \$38



plate mount Ø100 wheel swivel
p/n 470.40
price: \$32

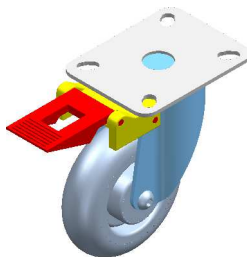
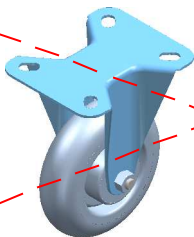


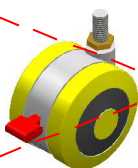
plate mount Ø100 wheel swivel
p/n 470.41
price: \$38

~~D I S C O N T I N U E D~~



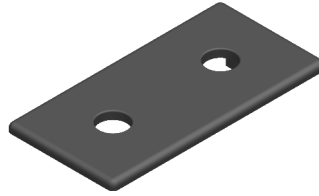
~~plate mount Ø100 wheel fixed
p/n 470.30
price: \$32~~

~~D I S C O N T I N U E D~~



~~bolt mount Ø80 wheel swivel
nylon wheels with brakes
p/n 470.80
price: \$23~~

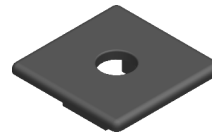
~~D I S C O N T I N U E D~~



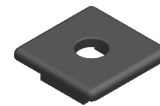
end cap 40x80
black or grey
p/n 370.48
price: \$2.50



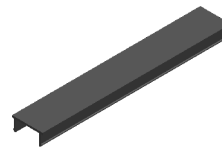
end cap 30x60
black or grey
p/n 370.36
price: \$2.20



end cap 40x40
black or grey
p/n 370.12
price: \$1.50



end cap 30x30
black or grey
p/n 370.11
price: \$1.30



cover strip, 2m length
black or grey
p/n 265.50
price: \$4.00



ratchet plug
black or grey
p/n 265.88
price: \$0.40



8mm plug
black or grey
p/n 265.58
price: \$0.35

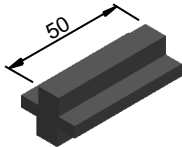
price list
aluminium profiles and accessories



4mm rubber wedge
p/n 265.54
price: \$1.50/m



6mm rubber wedge
p/n 265.56
price: \$2.40/m



sliding block set
p/n 406.66
price: \$21.60/set of 4



D-handle 140-8
p/n 382.14
price: \$14.60



D-handle 110-6
p/n 382.16
price: \$13.50



D-handle 105-4
p/n 382.12
price: \$4.80



slam latch
p/n 382.48
price: \$86



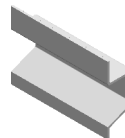
knurled knob
M6x20
price: \$5.50



adjustable handle L72/M8x16
p/n 380.73
price: \$9.40

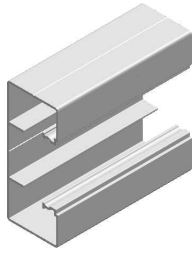


adjustable handle L52/M6x16
p/n 380.71
price: \$8.20

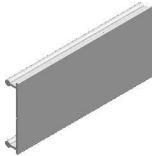


bin holder rail profile
p/n 026.70
price: \$8

price list
aluminium profiles and accessories

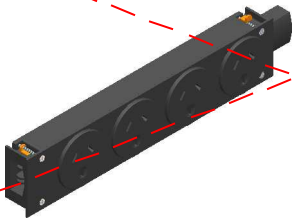


electrical duct 90x38
p/n 452.20
price: \$23/m



electrical duct cover
p/n 452.21
price: \$7/m

~~D I S C O N T I N U E D~~



~~four way socket outlet
p/n 312.80
price: \$42~~

~~D I S C O N T I N U E D~~



two way socket outlet
p/n 312.81
price: \$24



16mm cable gland
p/n 321.42
price: \$4.20



electrical duct mounting angle
p/n 312.32
price: \$3.80



interconnecting lead
p/n 312.05 500mm: \$16
p/n 312.40 4000m m: \$49



T-wrench handle allen key
4mm-\$16
5mm-\$19
6mm-\$22



ball end driver allen key
3mm: \$12
4mm: \$16
5mm: \$19
6mm: \$22



button head screw
M8x12: \$0.40
M8x16: \$0.45
M8x20: \$0.50



button head screw
M5x10: \$0.25
M5x12: \$0.30
M5x16: \$0.35



countersink head socket screw
M8x12: \$0.40
M8x16: \$0.45
M8x20: \$0.50



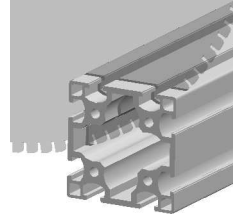
countersink head socket screw
M5x10: \$0.25
M5x12: \$0.30
M5x16: \$0.35
M6x10: \$0.35
M6x12: \$0.35
M6x16: \$0.40



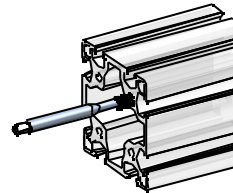
socket head cap screw
M6x12: \$0.30
M6x30: \$0.45



grub socket screw
M6x10: \$0.30
M6x12: \$0.35
M6x16: \$0.40

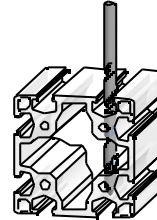


cut to size
80x80: \$4.50
40x80: \$4.50
60x60: \$3.10
30x60: \$3.10
40x40: \$2.50
30x30: \$2.50



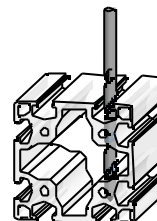
tap one end M8
80x80, 60x60: \$6.20
40x80, 30x60: \$3.80
40x40, 30x30: \$2.80

tap both ends M8
80x80, 60x60: \$10.60
40x80, 30x60: \$6.70
40x40, 30x30: \$3.80



drill hole for bracket connector
80 or 60 side (high side)
80x80, 40x80: \$3.90
60x60, 30x60: \$3.90

drill hole for bracket connector
40 or 30 side (low side)
40x80, 40x40: \$2.90
30x60, 30x30: \$2.90



drill hole for bolt connector
80 or 60 side (high side)
80x80, 40x80: \$5.20
60x60, 30x60: \$5.20

drill hole for bolt connector
40 or 30 side (low side)
40x80, 40x40: \$4.40
30x60, 30x30: \$4.40